



WAIKĪKĪ IMPROVEMENT ASSOCIATION

Wikiwiki Wire

E-newsletter keeping you up-to-date on Waikīkī news, features, trends and more!



Contents

3

SHORT TERM RENTAL BILL (BILL 41 2021) ADVANCES AT THE CITY COUNCIL

6

WAIKĪKĪ BEACH NEWS & UPDATES: THE WBSIDA MONITORING AND SUPPORTING 2022 LEGISLATION

7

LĪLIA WAIKĪKĪ RENTAL APARTMENTS OPEN IN SPRING 2022

MORE WAIKĪKĪ NEWS, EVENTS & FOOD

SPITFIRE ROTISSERIE & FLATBREAD -
VALENTINE'S SPECIAL

HALEKULANI - ART OF WELLBEING
PRESENTATIONS & LEWERS LOUNGE

HALEPUNA - BEST OF 2021 PACKAGE AND
TRAVEL PONO

HAWAI'I CONVENTION CENTER EARNS
HAWAI'I GREEN BUSINESS PROGRAM
AWARD

HAWAIIAN LANGUAGE MONTH AT
HO'OKELA, HYATT REGENCY WAIKIKI
BEACH RESORT & SPA

CELEBRATE THE HOLIDAY OF LOVE AT THE
HYATT REGENCY WAIKIKI BEACH RESORT
& SPA AND PUALEILANI ATRIUM SHOPS

VALENTINE'S DAY AT SHOR - 4 COURSE
PRIX FIXE MENU
NA HO'OLA - VALENTINE'S DELUXE SPA
OFFER

CELEBRATE AMORE AT IL LUPINO

CELEBRATE HAWAI'I'S RICH CULTURAL
HERITAGE AT WAIKIKI BEACH WALK

GET READY FOR FUN-FILLED FEBRUARY
AT ROYAL HAWAIIAN CENTER; ROYAL
HAWAIIAN CENTER ROARS INTO THE NEW
YEAR

TEX808 BBQ & BREWS - HAPPY HOURS &
BIG GAME PACK

THE WAIKIKI SHOPPING PLAZA: BUHO
COCINA Y CANTINA, ROYAL LOBSTER, SKY
WAIKIKI, STARBUCKS, AND TANAKA OF
TOKYO

WOLFGANG'S SPECIAL VANTINE'S MENU

PESCA WAIKIKI BEACH - VALENTINE'S
MENU

Short Term Rental Bill (Bill 41 2021) Advances at the City Council

The Honolulu City Council passed Bill 41 (2021) CD1 on second reading by a 7 to 2 vote. Council Members Andria Tupola and Radiant Cordero voted “no.” Council Members Heidi Tsuneyoshi and Augie Tulba voted "yes with reservations." The concerns expressed by the City Council members included: lack of engagement with legal short term rentals, high registration fees and lack of flexibility on 30 day rentals.

In September of 2021, the City and County of Honolulu Department of Planning & Permitting (DPP) proposed the amendments to the Land Use Ordinance (LUO) relating to bed and breakfast homes (B&Bs), hotels and Transient Vacation Units (TVUs), also known as short-term rentals (STRs). Bill 41 (2021) received first reading at the City Council on November 10, 2021.

Aiming to better manage tourism while simultaneously addressing housing needs for residents, the DPP is now rightly calling for amendments to the old ordinance. At a news conference, Mayor Rick Blangiardi said: “We have a housing crisis that, more than anything, the short-term vacation rentals have really impacted ... and taken a lot of units off the market that could be available to local people.”

In surveys and a myriad of public meetings, the community has expressed consternation over tourism growth culminating in over 10 million total visitors to Hawaii in 2019. As the Governor, Mayor and other community leaders have noted, this growth has occurred despite almost no increase in legal vacation units. To put the numbers into perspective, there are approximately 39,000 permitted



vacation units (including hotels) on O‘ahu, of which 32,000 is in Waikīkī. According to estimates done in 2018 by the Hawaii Tourism Authority, there were approximately 10,000 illegal STR units on O‘ahu - other estimates are as high as 25,000 vacation rental units. Even using the most conservative estimates, more that 20% of all the available vacation units on O‘ahu are short term rentals. According to DPP, all but 750 are unpermitted.

The latest proposals by DPP are certainly a robust effort to bring the current chaotic situation under control. One of the most dramatic proposed changes is in the definition of short-term rentals from less than 30 days to less than 90 days.

Bill 41 (2021) CD1, now goes back to the Zoning and Planning Committee Chaired by Council Member

The proposed changes are as follows:

- Provide greater enforcement tools over illegal and non-compliant STRs.
- All existing non-conforming B&Bs and TVUs will continue, provided the units are registered, pursuant to the ordinance.
- No new B&Bs and TVUs will be allowed or permitted in residential zoned areas.
- New B&Bs and TVUs will only be allowed in areas adjacent to and associated with existing Resort zoned property, specifically in the A-2 medium-density apartment zoning district located in the Gold Coast area of the Diamond Head Special district and in the A-1 low-density and A-2 medium density apartment zoning districts located adjacent to the Ko‘Olina and Kuilima resort areas.
- All STRs will be required to include their certificate of registration number or their nonconforming use certificate number in all advertisements. Any advertisement of a property for use as a B&B or TVU without such registration number is a violation.
- All registered existing non-conforming and newly permitted TVUs are to be assessed at the hotel and resort rate for real property tax purposes.
- All new B&Bs and TVUs must have and keep current general excise and transient accommodations tax licenses, and must maintain a minimum of \$1 million in commercial general liability insurance for their units at all times.
- The definitions of “bed and breakfast home” and “transient vacation unit” are amended to increase the rental period for TVUs or B&Bs from less than 30 days to less than 90 days.
- The Department of Planning and Permitting’s violation enforcement procedures have been overhauled in order to better equip their inspectors to investigate and enforce violations of the Land Use Ordinance, including the provisions related to STRs.

Brandon Elefante. The next hearing is currently scheduled for February 17, 2022. Depending on the result of the committee hearing the Bill could be up for final vote by the City Council as early as the next full council meeting on February 23rd.

The Waikīkī Improvement Association (WIA) strongly supports the proposed amendments.

WIA favors stronger regulations and enforcement measures in dealing with the illegal transient vacation rentals in our county.

The Proposed Amendments apply stricter limits of where transient vacation units may exist than the ordinance passed in 2019. The amendments also change the definition of a short term rental from 30 days to 90 closing a large loop hole in the existing law.

WIA strongly believes that whether and where to permit such vacation rentals should be a matter of careful City and County of Honolulu-wide planning, that any and all such short-term rentals should be legally conforming, that the operation of such rentals should be fully transparent, and that the City should have full enforcement mechanisms and resources. We are comfortable that the proposed amendments help accomplish that goal.



WAIKĪKĪ BEACH NEWS AND UPDATES

The WBSIDA Monitoring and Supporting 2022 Legislation

The Waikīkī Beach Special Improvement District Association (WBSIDA) is monitoring and providing testimony of several pieces of legislation before the Hawai'i State legislature this year. The WBSIDA is tracking legislation related to resilience planning, special improvement districts, State DLNR capital improvement project funding, beach assessments and coastal zone management. Of the dozen or so bills being monitored two companion sets in particular that may be of interest are summarized below that the WBSIDA is in support.

RELATING TO SEA LEVEL RISE ADAPTATION (Waikiki Resilience Plan)

[SB 2724](#), [HB 1669](#)

SB 2724 and HB 1669 require the State Office of Planning and Sustainable Development (OPSD) to convene a working group to develop a Waikīkī resilience plan to address climate change and sea level impacts in the Waikīkī special district. This effort is an important step towards the development of an adaptation and resilience strategy for Waikīkī and will serve as framework and demonstration for other communities in Hawai'i.

RELATING TO SPECIAL IMPROVEMENT DISTRICTS

[SB 2725](#), [HB 1672](#)

SB 2725 and HB 1672 expand the purpose and rationale for which counties may create special improvement districts to include environmental research, restoration, and maintenance; natural resource management; and natural hazard mitigation to improve environmental conditions and provide community benefits. This measure is an important step towards the development and facilitation of additional special improvement districts for all communities in Hawai'i.

RELATING TO BEACHES (Monitoring)

[SB 3027](#), [HB1831](#)

This legislation proposes to amend the Hawai'i State Planning Act, Section 226-11 Hawaii Revised Statutes to include the development of a statewide beach assessment study and a restoration and conservation plan.

Līlia Waikīkī Rental Apartments Open in Spring 2022

RENTERS ARE INVITED TO LEARN ABOUT THE FIRST ALL-RENTAL APARTMENT DEVELOPMENT TO BE BUILT IN WAIKĪKĪ IN DECADES AT THE AIRSTREAM AT ALA MOANA

Brookfield Properties are hosting a rare and classic 1972 Airstream at Ala Moana Center that will be the information center for its upcoming all-rental development, Līlia Waikīkī. Shoppers and visitors will be able to learn about Līlia Waikīkī's residential collection of studios, one-, two-, and three-bedroom apartments premiering in Spring 2022. The airstream will be open to the public every Thursday – Sunday from 12:00 pm to 6:00 pm beginning January 28, 2022. The Airstream is located on the second level parking lot of Ala Moana Center, across from Harry Winston and Genki Sushi.

The Airstream will be wrapped with custom artwork by Kamea Hadar, co-lead director of POW! WOW! Hawai'i. To honor the life and legacy of Queen Emma, the name Līlia Waikīkī was inspired by her favorite flower, the lily. Hadar's artwork is symbolic of Queen Emma's passion for wellness and nature. The artistry behind Līlia's thoughtful design and programming create a welcoming home for residents rooted in community, open space, and healthy lifestyles.



Līlia Waikīkī’s 28-story residential tower located at Kānekapōlei Street and Kūhio Avenue is the first for-rent apartment development built in Waikīkī in multiple decades. It will include 401 rental units, 38 of which will be reserved for households earning no more than 80 percent of the area median income (AMI). Brookfield is now accepting lottery applications through March 1, 2022 for the 38 affordable units.

Embracing modern open floorplans, all units will feature high-quality finishes and a private lanai with expansive mauka, Diamond Head or makai views. Amenities include a resort-style pool and spa, a state-of-the-art fitness center, private cabanas for outdoor dining, grilling stations, and a lush sitting garden centered around a majestic banyan tree. Residents can also enjoy beautifully landscaped walking paths accented with native Hawaiian plants surrounding the property.



The opening of Līlia Waikīkī will also mark the return of Waikīkī’s only full-service, locally-owned grocery store. The previous Food Pantry, which served the Waikīkī community for 60 years, will now be called Waikīkī Market operated by Food Pantry Ltd. The two-story grocery store will anchor the Kūhio Avenue frontage of Līlia Waikīkī, surrounded by a dynamic retail environment of shops and restaurants.



“We are pleased to debut our 1972 Airstream information center so residents can learn more about Līlia Waikīkī’s exciting offerings, including the lottery for the 38 affordable units” said Kris Hui, vice president of mixed-use development at Brookfield Properties. “With rental options in short supply, we are eager to deliver brand new apartments to Hawaii’s housing inventory this Spring.”



For more information about Līlia Waikīkī, the Airstream information center, and affordable lottery, visit LiliaWaikiki.com.





Valentine's Special

February 14, 2022

New York Steak & Shrimp

Dinner
for Two



Two 8 oz savory steaks & butter garlic shrimp served with choice of rice or mashed potatoes, and choice of steamed vegetables or pasta salad

\$35⁹⁹

Valentine's Day

Monday, February 14, 2022

Breakfast

9am – 1:45pm

Chocolate Cookie Waffle \$17

Chocolate Belgium Waffle, oreo cookies, strawberry whipped cream, chocolate sauce

Lunch

11am – 1:45pm

New York Steak & Eggs \$27

Grilled New York Steak, two eggs your way, truffle potatoes, fruit, choice of toast and jam

Dinner

5pm – 8:45pm

Oysters on the Half Shell \$30

Half dozen Goose Point Oysters, red chili granita, katsuo soy, scallion

Miso Panna Cotta \$20

Crab, tosazu gelée, daikon, green onion

Pan Roasted Snapper \$46

Heart of palm soubise, shaved fennel salad, white balsamic dressing

Red Velvet Chocolate Crepe \$11

Cream cheese chocolate mousse, raspberry coulis, Godiva Liqueur chocolate sauce

For Reservations

(808) 923-5689 or basaltwaikiki.com

*While supplies last.
Tax and gratuity not included.*

BASALT
AT DUKES LANE MARKET & EATERY



Halekulani
On the Beach at Waikiki

The striking lobby Sogetsu floral display nestled in Kiawe branches was created by John Tanji Koga, who creates abstract sculptures and paintings inspired by the ocean and mountains of Hawaii. His style of artwork is indicative of his mentor, renowned abstract expressionist, Tadashi Sato.

We invite you to visit "Rising Light", an exclusive exhibit showcasing Mr. Koga's artwork from now through the end of April in a special gallery located near House Without A Key. Gallery hours are from 9:00 am to 6:00 pm.



ART OF WELLBEING PRESENTATIONS

Group sessions designed to empower participants on their own journey to optimal health and wellness. Discussions cover each pillar of the Art of Wellbeing (Nourish, Move, Explore, Renew, Rest and Discover) and are facilitated by our team of resident experts.

The 75-minute discussion is held the second and fourth Saturday of each month and is open to the public, \$25 per person. Please call 808-931-5322 for more information and to reserve a spot.

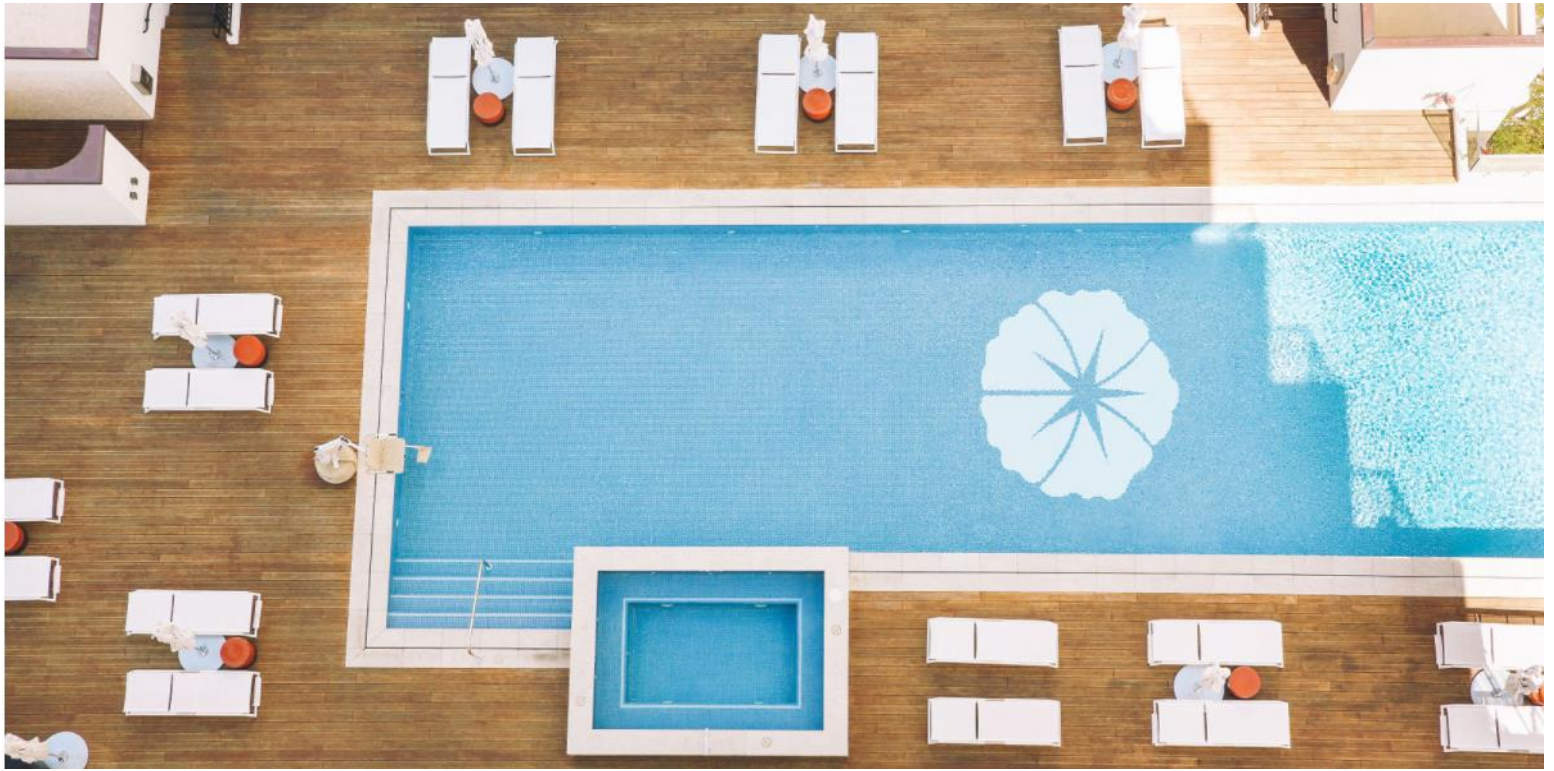


Lewers Lounge®

Return to Lewers Lounge for contemporary live jazz in a chic setting. An array of classic spirits, rare whiskeys, refined wines by the glass and sophisticated mocktails accompanied by a selection of small plates to share will please the most discerning of guests. Featuring Tommy James, former director and composer of the Duke Ellington Orchestra. Wednesday through Saturday evenings.



February – Romance is in the air....
Enjoy a quick getaway to Waikiki's newest luxury boutique.



BEST OF 2021 PACKAGE

We are extending our current Best of 2021 Package into 2022 which includes:

- Daily Breakfast for up to two-persons at Orchids (located at Halekulani)
- \$25 daily resort credit
- Sparkling Wine Welcome Amenity
- Halepuna Access – Complimentary access to the Honolulu Museum & Bishop Museum
- Complimentary WiFi
- NO resort fees

Please call 808-445-9595 to reserve your room today!



Photo Courtesy of Gunstock Ranch

TRAVEL PONO

We ask our visitors to *"Travel Pono"* or *"travel with care."* We are excited to launch a partnership with the Hawaiian Legacy Reforestation Initiative (HLRI), a Hawaii-based nonprofit organization whose mission is to restore the integrity and the biodiversity of Hawaii's endemic forests.

Our online shop features an exclusive collection of signature logo items. A portion of the sales from these items will be used to support the HLRI mission. Guests are also welcomed to plant their own tree in our Halepuna Waikiki / Halekulani Forest at Gunstock Ranch. For more information, please visit shop.halepuna.com.



Hawai'i Convention Center Earns Hawai'i Green Business Program Award



On January 14, 2022, the Hawai'i Convention Center was recognized among 14 venues and events with the 2021 Hawai'i Green Business Program (HGBP) Award by the State of Hawai'i for its energy efficiency and sustainable business practices. The Center was previously honored with the award in 2020, 2018 and 2016.

From the very foundation of its building design to the corporate guidance of ASM Global, the Center is guided by its Ho'omalūō (to conserve; to use or manage wisely) Program. Efforts include:

- **One Million Trees:** The Center has partnered with the nonprofit Hawaiian Legacy Reforestation Initiative (HLRI) to plant 1 million native and endemic trees for reforestation throughout the Hawaiian Islands.
- **LEED Certification:** In 2018, the Center earned LEED v.4 O+M Gold (Leadership in Energy and Environmental Design) certification, widely recognized as one of the highest standards in encouraging sustainable design practices and operations. The Center was re-certified LEED v.4 O+M Gold in 2021.
- **Energy Conservation, Waste Reduction & Event Practices:** From an open-air design that reduces the need for air conditioning to a computer-based smart building management system, the Center has achieved major conservation milestones, including diverting much of the total waste generated at the facility from landfills and organizing "zero-waste" events.
- **Diversion Rate for 2021:** In 2021, the Center diverted 61% of its total waste to recycling.

The virtual HGBP awards ceremony was hosted by the Hawai'i State Energy Office, the Hawai'i State Department of Health, and the Honolulu Board of Water Supply. The HGBP, which was created by the Hawai'i State Energy Office and the Department of Health in 2002, provides technical assistance to businesses, government agencies and nonprofits seeking to operate in a more environmentally and socially responsible manner.

HAWAIIAN LANGUAGE MONTH

AT HO'OKELA, HYATT REGENCY WAIKĪKĪ BEACH RESORT & SPA



Join us in February for a month-long celebration of the Hawaiian language. Scan the QR Code for more information on events and activities. Ho'okela is located on the 2nd Floor, Diamond Head Tower.



February 4th

Prince Jonah Kūhiō Kalaniana'ole
and Hawaiian Civic Clubs by
Hailama Farden, 6 PM

February 11th

'Ohe Kāpala presentation by
Kumu Hula Auli'i Mitchell, 6 PM

February 18th

Kapaemāhū presentation
by Kumu Hina, 6 PM

February 25

Private showing of Ni'ihau
Shell Lei from 2 PM to 6 PM,
Presentation of Ni'ihau
by Ni'ihau Families

Ku'uipo Kumukahi

Director of Hawaiian Culture
& Community Relations

Call 808-237-6423
for reservations


HAWAIIAN HERITAGE AND CULTURE CENTER



CELEBRATE THE HOLIDAY OF LOVE AT THE HYATT REGENCY WAIKIKI BEACH RESORT & SPA AND PUALEILANI ATRIUM SHOPS

HONOLULU, HI (January 31, 2022) – Commemorate the holiday of love with a little bit of pampering plus a romantic dinner for two and shopping!

Nā Ho'ōla Spa: Celebrate Valentine's weekend at Nā Ho'ōla Spa. Indulge and book a 80 minute deluxe spa treatment from February 12-14, which includes a champagne back scrub, mini facial and vanilla butter cream massage! To book a reservation online, visit www.nahoolaspawaikiki.com. Nā Ho'ōla Spa is located on the 5th floor, take the elevator from the Pualeilani Atrium Shops at ground level.

SHOR: During the weekend of love and on Valentine's Day, enjoy a special couple's evening at SHOR. While listening to live music and entertainment, partake in a scrumptious 4-course dinner including Diver Scallops with Roasted Kabocha Squash Purée, Waipoli Greens with Big Island Goat Cheese Tarte, Grilled Filet Mignon with Cognac-Peppercorn Demi-Glace or Pono Provisions Prosciutto wrapped Mahi Mahi and topping off with a Manoa Chocolate Raspberry Cheesecake. To make a reservation, call (808) 237-6395 or book online at OpenTable. SHOR is located on the 3rd floor, Diamond Head Tower. SHOR is located on the 3rd floor, Diamond Head Tower.

Pualeilani Atrium Shops: Drop in and shop on at the Pualeilani Atrium Shops! Take your Valentine on a shopping expedition through our 3-story open-air atrium that has more than 30 shops and restaurants. Let your loved one pick out a gift of choice from locally made jewelry to island apparel. Pualeilani Atrium Shops is located in the Hyatt Regency Waikiki Beach Resort & Spa. For more information, visit www.pualeilanishops.com.

Ho'okela: Hyatt Regency Waikiki Beach Resort & Spa's Hawaiian Culture Center, Ho'okela is filled with Hawai'i's rich history in the form of photographs, instruments, books and more. This February, join us in celebrating Hawaiian Language Month every Friday with interactive activities and presentations on Hawaiian topics and language. Participation is complimentary and reservations are required. Ho'okela offers weekly activities including hula-cise, bamboo printing, a walking tour or just talk story with professional Hawaiian music performer, songwriter and recording artist Ku'uipo Kumukahi. Ho'okela is located on the 2nd floor, Diamond Head Tower. For more information and reservations, call (808) 237-6423.

About Hyatt Regency Waikiki Beach Resort and Spa

Balanced between the idyllic beauty of the legendary Waikiki Beach and the dynamic city center, Hyatt Regency Waikiki Beach Resort and Spa is a vibrant destination combining relaxation and adventure with true Hawaiian hospitality. Each of the 1,230 guestrooms, including 19 suites, offers Hawaiian elegance and private lanai with panoramic ocean beach, mountain, and city views. With an unrivaled location just steps from world-famous waves, the resort affords effortless exploration of the island's attractions, from Diamond Head Crater, Honolulu Zoo, and Waikiki Aquarium to world-class shopping, sophisticated dining and expert surfing lessons. Offering endless amenities including luxurious treatments at the 10,000 square foot Na Ho'ola Spa, StayFit Fitness Center, swimming pool overlooking Waikiki Beach, one of Waikiki's biggest breakfast buffets at SHOR, an expansive dinner buffet experience at The Buffet at Hyatt, tropical cocktails at SWIM Ocean Bar, and more than 30 boutiques on site. Hyatt Regency Waikiki Beach promises Hawaiian-style excitement paired with the warmth of authentic Aloha spirit.

For more information regarding Hyatt Regency Waikiki Beach Resort and Spa, please contact the resort by phone at (808) 923-1234 or visit the resort website at: www.hyattregencywaikiki.com.

About Hyatt Regency

Hyatt Regency offers a full range of services and facilities tailored to serve the needs of meeting planners, business travelers and leisure guests. Properties range in size from 180 to over 2,000 rooms and are conveniently located in urban, suburban, airport, convention and resort destinations around the world. Hyatt Regency convention hotels feature spacious meeting and conference facilities designed to provide a productive environment allowing guests to convene and connect. Hyatt Regency hotels in resort locations cater to couples seeking a getaway, families enjoying a vacation together and corporate groups seeking a functional and relaxed atmosphere in which to conduct business and meetings.



Valentine's Day at SHOR

4 COURSE PRIX FIXE MENU

FEBRUARY 14, 2022

ENTERTAINMENT-LIVE MUSIC

ALL LADIES WILL RECEIVE A LONG STEMMED RED ROSE AT DINNER

WINE PAIRING: **SPARKLING AMUSE BOUCHE MAZARINI PROSECCO** 5oz.

5oz. 1ST COURSE / OR **\$13.75 BY THE GLASS**

first

DIVER SCALLOPS WITH ROASTED KABOCHA SQUASH PURÉE

SPINACH GOMAE, LEMON BUERRE NOISETTE, MEYER LEMON GELÉE

WINE PAIRING: **ROSÉ POGGIONE BRANCATO** 3oz. / OR **\$14 BY THE GLASS**, 5oz.

second

WAIPOLI GREENS WITH BIG ISLAND GOAT CHEESE TARTE

HO FARMS TOMATO, CANDIED MACADAMIA NUTS AND MAUI ONION, PAPAYA SEED VINAIGRETTE

WINE PAIRING: **WHITEHAVEN SAUVIGNON BLANC** 3oz. / OR **\$18 BY THE GLASS**

third

(choose one)

6 OZ GRILLED FILET MIGNON WITH COGNAC-PEPPERCORN DEMI GLACE

POTATO PURÉE, CARAMELIZED BROCCOLINI, HAMAKUA MUSHROOMS CONFIT

WINE PAIRING: **OBERON CABERNET SAUVIGNON** 3oz. / OR **\$18 BY THE GLASS**, 5oz.

OR

PONO PROVISIONS PROSCIUTTO WRAPPED MAHI MAHI

VANILLA BUERRE BLANC, CARAMELIZED BROCCOLINI,

BUTTER POACHED RED BLISS POTATOES, LOMI TOMATO

WINE PAIRING: **AU BON CLIMAT PINOT NOIR** 3oz. / OR **\$18 BY THE GLASS**, 5oz.

fourth

MANOA CHOCOLATE RASPBERRY CHEESECAKE

ORANGE-GRAND MARNIER GLACE

WINE PAIRING

\$21⁰⁰

ADDITIONAL
PER PERSON

SHOR

4-COURSE DINNER

\$90⁰⁰

PER PERSON

HYATT REGENCY WAIKIKI BEACH RESORT & SPA
3RD FLOOR, DIAMOND HEAD TOWER

For reservations call **808-237-6395**
or visit **opentable.com**

•  OpenTable®





CELEBRATE LOVE

VALENTINE'S

Deluxe Spa Offer

Enjoy three treatments this Valentine's Day with a deluxe offer - champagne back scrub, mini facial and vanilla butter cream massage.

(80 mins, \$240)

Then indulge and relax with macadamia nuts herbal tea and decadent chocolates.

LIMITED TIME OFFER

Valid Feb 12 - 14, 2022



Nā Ho'ōla.
S P A



www.nahoolaspawaikiki.com

tel: 808-237-6330

Celebrate

Amore!



Valentine's ROMANTIC EVENING



2/14/2022

Four Coured Dinner

\$125 Per Guest (\$222 Per Couple)

Monday Evening from 4pm to 10pm

RESERVATIONS: (808) 922-3400

FIRST COURSE

CHARCUTERIE

PARMIGIANO REGGIANO, SPECK DRY-CURED AND SMOKED PROSCIUTTO FROM ALTO-ADIGE, ITALY

(Includes a 6oz Glass of Cava Sparkling Wine)

SECOND COURSE

PORTOBELLO CAPRESE

WHOLE GRILLED PORTOBELLO MUSHROOM, BUFFALO MOZZARELLA, BASIL, OLIVE OIL, BALSAMIC DRIZZLE

CHOICE OF MAIN COURSE

AHI AVOCADO TOWER & SEARED SCALLOPS

SASHIMI AHI TUNA, FRESH AVOCADO OVER ARUGULA

SEARED DEEP SEA SCALLOPS, LEMON BUTTER CHARDONNAY SAUCE, CAPERS

OR

OSSOBUCCO ALA MILANESE

BRAISED CROSS-CUT VEAL SHANK, FRESH HERB MIREPOIX, SAFFRON RISOTTO & SEASONAL VEGETABLES

DESSERT COURSE

CHOCOLATE LOVE

A RICH AND SILKY FLOUR-FREE CAKE WITH A DIVINE CHOCOLATE EXTRAVAGANCE, FRESH STRAWBERRIES, CRÈME FRAICHE.

IL LUPINO

TRATTORIA & WINE BAR

Celebrate Amore at Il Lupino! We have a perfect evening planned featuring a delectable 4-course dinner created with romance in mind. We suggest early reservations as we will sell out, so please call us at 808-922-3400 or go to illupino.com or opentable.com.

And if you're planning a weekend staycation, please keep Il Lupino in mind. From a delightful breakfast to an authentic Italian lunch and dinner, exquisite desserts, and an award-winning wine list, Il Lupino offers one of the finest dining experiences in Waikiki!

Dine-In • Take-Out • Delivery
Open Daily 9:00am-10:00pm
Happy Hour 12:00-6:30pm

Royal Hawaiian Center
Bldg B, Level 1
Validated Parking

808.922.3400
illupino.com



Wine Spectator



BEST OF
AWARD OF
EXCELLENCE

IL LUPINO
TRATTORIA & WINE BAR





Celebrate Hawaii's Rich Cultural Heritage at Waikiki Beach Walk



(L-R): Mark Yim, Dwight Kanae, Bobby Hall and Ocean Kaowili of Blue Hawaiian Band

Live Hawaiian music and Lunar New Year performances enhance the dining and shopping experience

Waikiki Beach Walk, the vibrant shopping, dining and entertainment district at Lewers Street and Kalakaua Avenue, is committed to preserving and sharing Hawai'i's rich multi-cultural heritage.

In February this includes a celebration of **Lunar New Year**, marking an auspicious start to the Year of the Tiger on **Saturday, February 5** at 4 p.m. with a traditional lion dance and firecrackers to ward away evil spirits and facilitate good fortune.

On **Sunday, February 6**, Waikiki Beach Walk will feature four Hawaiian music legends when "**Mele Hali'a**" welcomes the **Blue Hawaiian Band** from 5 to 6 p.m. Mele Hali'a is the monthly Sunday showcase featuring the finest in Hawaiian musical performances. The Blue Hawaiian Band includes legendary musicians Bobby Hall, Ocean Kaowili, Dwight Kana'e and Mark Yim. The band was created with the intent to perpetuate the legacy of the fabled, award winning musical group, Pater Moon Band. This must-see quartet performs classics from Peter Moon Band, plus traditional Hawaiian and island contemporary music.

Every Tuesday, Waikiki Beach Walk hosts "**Kū Ha'aheo**," live Hawaiian entertainment from 4:30 to 6 p.m. The weekly series at the Plaza Stage is set for **Feb 1, 8, 15, and 22**.

Waikiki's popular "**Ka Lei Hula**" (**Feb. 6, 13, 20 and 27**) offers complimentary weekly hula practice each Sunday morning at 9 a.m.

On Monday, **February 21**, The Royal Room/Hawaiian Music Hall of Fame will live stream a special "**Make Music Hawaii**" performance at 11 a.m. [Facebook.com/hawaiianmusichalloffame](https://www.facebook.com/hawaiianmusichalloffame)

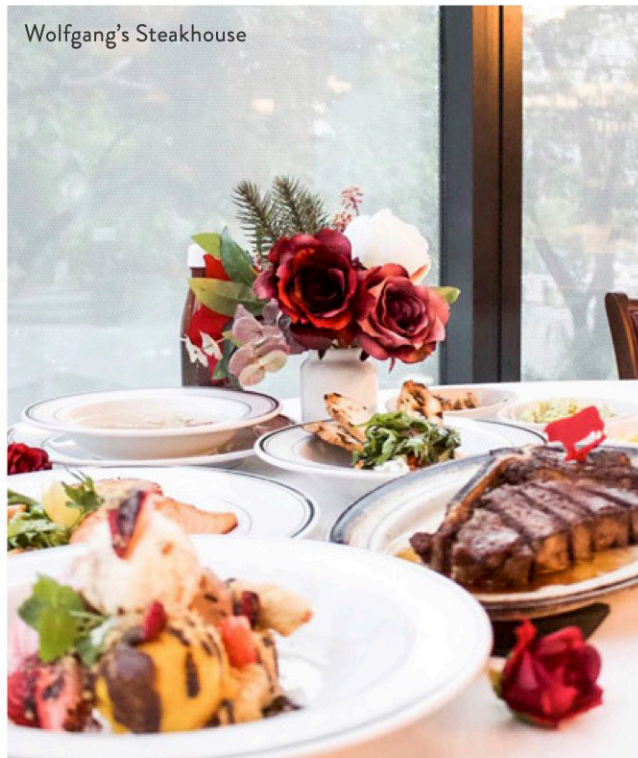
Offering **3 free hours of validated parking**, Waikiki Beach Walk's collection of unique locally owned businesses includes Blue Ginger, Big Wave Dave Surf & Coffee, SoHa Living, Coco Mango, Mahina, Kahala, The Ukulele Store and Hele Mai Salon, among others. For details and the latest news, visit www.waikikibeachwalk.com or Facebook/Instagram @waikikibeachwalk

GET READY FOR A FUN-FILLED FEBRUARY AT ROYAL HAWAIIAN CENTER



Plan the Perfect Date at Royal Hawaiian Center

Love is in the air at Royal Hawaiian Center! Valentine's Day is right around the corner, and restaurants are filling up fast. Make sure you've reserved a spot for you and your sweetheart to enjoy the special occasion. Royal Hawaiian Center has some terrific dining options that are sure to please any palate. **Wolfgang's Steakhouse** (Building C, Level 3), **Tim Ho Wan** (Building B, Level 3), **Il Lupino Trattoria & Wine Bar** (Building B, Level 1), **Doraku** (Building B, Level 3), **P.F. Chang's** (Building A, Level 1 and 2), **Noi Thai Cuisine** (Building C, Level 3), **The Cheesecake Factory** (Building C, Level 1) and **Tsurutontan** (Building B, Level 3) all offer open-air dining to ensure your safety while you create lasting memories with your loved one.



Wolfgang's Steakhouse

With free parking for kama'āina and military members, you can spend a day at the beach, take a stroll through Waikīkī, watch the sunset, and top it off with romantic dinner at Royal Hawaiian Center. Make your reservation today!



Il Lupino Trattoria & Wine Bar

LUNAR NEW YEAR GIFT WITH PURCHASE

Feeling lucky? Now until February 13, shoppers who redeem \$300 or more in Royal Hawaiian Center receipts can pick up a **lucky lisee red envelope** at Helumoa Hale Guest Services. Each lisee envelope will contain a lucky slip that corresponds to a prize. Festive holiday prizes include merchandise from participating merchants, specialty Royal Hawaiian Center logo items and gift cards ranging in value from \$28 to \$168 — reflecting the Chinese belief that eight is the luckiest number. Receipts that are submitted to receive a gift with purchase must be dated between January 24 and February 13. Supplies are limited, so guests are encouraged to start their shopping early!



Lai See Envelopes

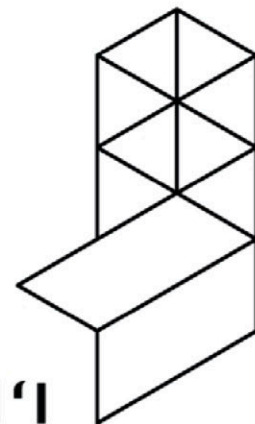
ROYAL HAWAIIAN CENTER ROARS INTO THE NEW YEAR!



The Hawai'i Triennial, presented by **Hawai'i Contemporary**, connects communities from across our islands and regions united by the Pacific Ocean and beyond. The public exhibition is complemented by year-round public and education programs contributing to the local arts ecosystem.

HT22 BRINGS THE SPIRIT OF ASIA-PACIFIC AND OCEANIA TO ROYAL HAWAIIAN CENTER

From February 18 to May 8, Royal Hawaiian Center will showcase works from international artists as the Waikīkī venue for the **Hawai'i Triennial 2022 (HT22)**. The art installations at Royal Hawaiian Center, part of a three-month-long, multi-site exhibition of contemporary art, will be open to the public and free to view.



HAWAI'I CONTEMPORARY

Artists featured at the Royal Hawaiian Center exhibit space include: **Athena Robles and Anna Stein of Double A Projects; Momoyo Torimitsu; Zheng Bo; Sun Xun; Herman Pi'ikea Clark; Justine Youssef; Beatriz Santiago Munoz; Lawrence Seward; Tsuyoshi Hisakado; and Miao Ying.** Installations range from sculpture to video to spoken word, and some works are for mature audiences only. If an exhibit at Royal Hawaiian Center is not suited for children, a discretionary sign will be posted near the entrance. Learn more about HT22 here: <https://hawaiicontemporary.org>.



Curatorial Focus Team

FEBRUARY COMPLIMENTARY CULTURAL PROGRAMMING



LĀ PULE SUNDAY	PŌ 'AKAHI MONDAY	PŌ 'ALUA TUESDAY	PŌ 'AKOLU WEDNESDAY	PŌ 'AHĀ THURSDAY	PŌ 'ALIMA FRIDAY	PŌ 'AONO SATURDAY	
		1 11 AM - 12 PM Hula Lesson, G1 5:30 PM - 6:30 PM Kawika Trask Trio, G1	2 11 AM - 12 PM Lauhala Lesson, A2 5:30 - 6:30 PM Pu'uhonua, G1	3 3 PM - 4 PM Keiki Hula Lesson, G1 5:30 - 6:30 PM Hula & Music Performance, G1 5:30 - 6:30 PM Kawika Trask Trio, G1	4 12 PM - 1 PM Lei Making Lesson, A2 5:30 - 6:30 PM Malu Productions, G1	5 3 PM - 4 PM Keiki Hula, G1 5:30 - 6:30 PM Hula Kahiko, G1	
6	7 11 AM - 12 PM Ukulele Lesson, HH	8 11 AM - 12 PM Hula Lesson, G1 5:30 PM - 6:30 PM Kawika Trask Trio, G1	9 11 AM - 12 PM Lauhala Lesson, A2 5:30 - 6:30 PM Pu'uhonua, G1	10 3 PM - 4 PM Keiki Hula Lesson, G1 5:30 - 6:30 PM Hula & Music Performance, G1 5:30 - 6:30 PM Kawika Trask Trio, G1	11 12 PM - 1 PM Lei Making Lesson, A2 5:30 - 6:30 PM Malu Productions, G1	12 3 PM - 4 PM Keiki Hula, G1 5:30 - 6:30 PM Hula Kahiko, G1	
13	14 11 AM - 12 PM Ukulele Lesson, HH	15 11 AM - 12 PM Hula Lesson, G1 5:30 PM - 6:30 PM Kawika Trask Trio, G1	16 11 AM - 12 PM Lauhala Lesson, A2 5:30 - 6:30 PM Pu'uhonua, G1	17 3 PM - 4 PM Keiki Hula Lesson, G1 5:30 - 6:30 PM Hula & Music Performance, G1 5:30 - 6:30 PM Kawika Trask Trio, G1	18 12 PM - 1 PM Lei Making Lesson, A2 5:30 - 6:30 PM Malu Productions, G1	19 3 PM - 4 PM Keiki Hula, G1 5:30 - 6:30 PM Hula Kahiko, G1	
20	21	22 11 AM - 12 PM Hula Lesson, G1 5:30 PM - 6:30 PM Kawika Trask Trio, G1	23 11 AM - 12 PM Lauhala Lesson, A2 5:30 - 6:30 PM Pu'uhonua, G1	24 12 PM - 1 PM Keiki Hula Lesson, G1 5:30 - 6:30 PM Hula & Music Performance, G1	25 12 PM - 1 PM Lei Making Lesson, A2 5:30 - 6:30 PM Malu Productions, G1	26 3 PM - 4 PM Keiki Hula, G1 5:30 - 6:30 PM Hula Kahiko, G1	
27	28 11 AM - 12 PM Ukulele Lesson, HH	<h2 style="text-align: center;">HELUMOA HALE</h2> <p style="text-align: center;">Visit or call 808.922.2299 for the most updated information about our cultural lessons and special events, to receive a one-of-a-kind gift with an eligible purchase, or relax in our Heritage Room and learn about the rich history of Helumoa. He mai!</p>				<p>LOCAL INFORMATION</p> <p>A2: Bldg. A, 2nd Floor G1: The Grove Stage HH: Helumoa Hale</p> <p>For more information, call Helumoa Hale Guest Services, 808.922.2299</p>	

The Royal Grove is an open air venue subject to inclement weather. All activities, events and performances are subject to change without notice. Contact Helumoa Hale Guest Services at 808.922.2299 for the latest information. Standard parking rates apply.

★ Dine-In

★ Take-Out

★ Delivery

★ Online Ordering

★ Catering

★ Parties/Events

★ Great Food

★ Full Bar

★ TV Sports

★ Indoor/Outdoor Seating

★ Friendly Service



2 DAILY HAPPY HOURS

2PM *til* 5PM

- 1/2 OFF ALL APPETIZERS
- \$4 PBR DRAFT
- \$5 PINEAPPLE EXPRESS
- \$5 FROZEN MARGARITAS
- \$5 TITO'S COCKTAILS

9PM *to* CLOSE

- \$4 PBR DRAFT
- \$5 FIREBALLS
- \$6 JAMESON'S OR JACK
- \$6 TITO'S COCKTAILS
- \$10 TEXAS TEAS
- PLUS OUR LATE NIGHT FOOD MENU

DON'T FORGET ABOUT

Taco TUESDAYS



READY FOR THE BIG GAME?

SUNDAY, FEB 13TH

ORDER AHEAD

AT TEX808.COM OR AT ANY TEX808 LOCATION

BBQ PACK

GREAT FOR A PARTY... FEEDS 4-6
BRISKET, PULLED PORK & RIBS
MAC-N-CHEESE, BBQ BEANS,
DINNER ROLLS

79⁹⁹

CHICKEN WINGS

PARTY PACK
DUSTED WITH OUR TEX808 DRY RUB
SERVED WITH SIDES OF BUFFALO SAUCE,
BBQ SAUCE AND RANCH
25 FOR \$30



Order your **BIG GAME PACK**
in store today! Online ordering
will be available starting 2/7.

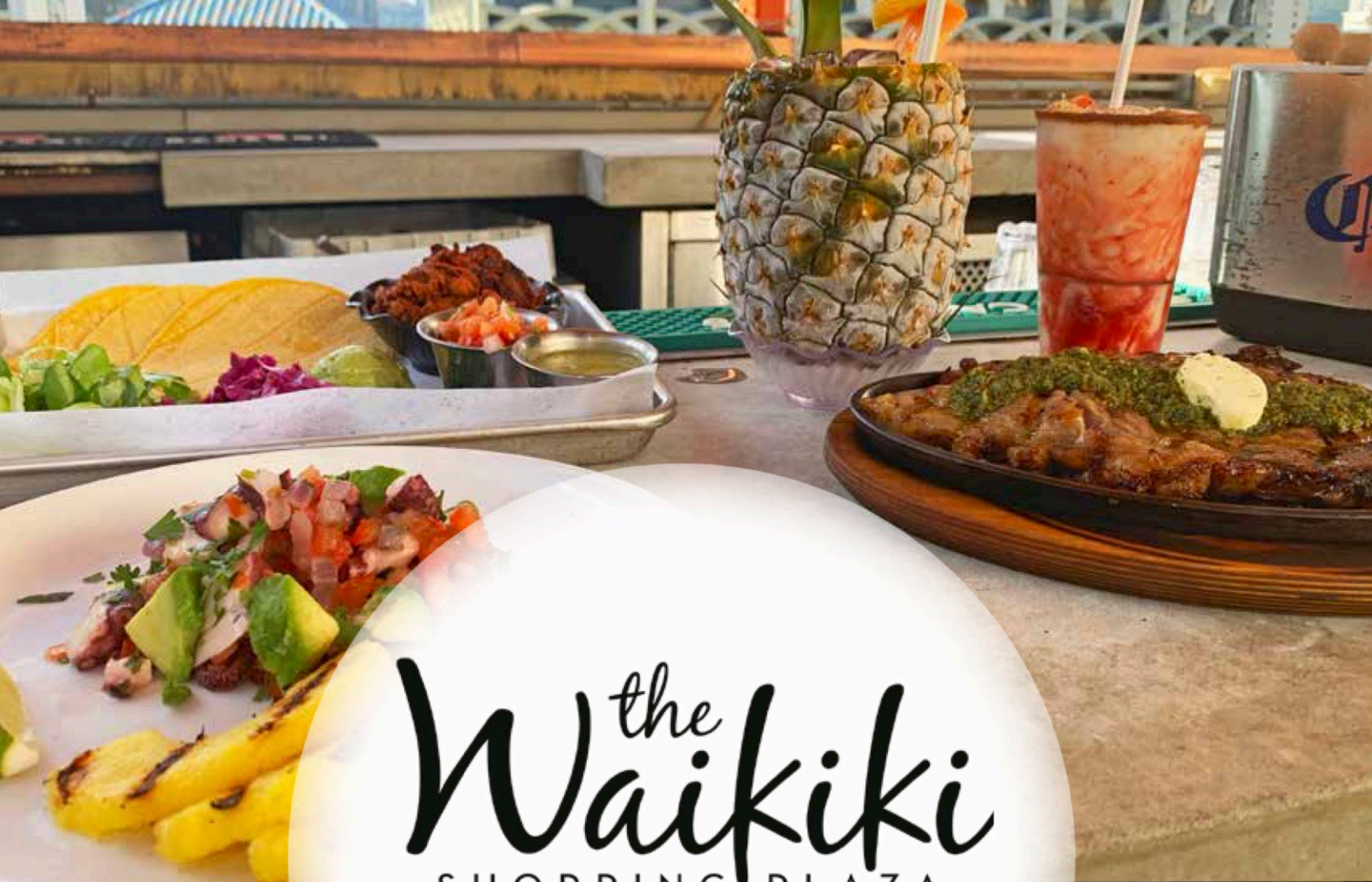
NOW OPEN IN WAIKIKI @ THE LAYLOW • 2299 KUHIO AVENUE

SUN-THU 4-11PM • FRI & SAT 2PM-MIDNIGHT

MON - TRIVIA NIGHT • TUE - TACO TUESDAYS • WED - OPEN MIC NIGHT

FRI - THE COMEDY PIT • CHECK ONLINE FOR OUR LIVE MUSIC SCHEDULE

tex808.com • @tex_808 • 808.888.2495



the
Waikiki
SHOPPING PLAZA
DINING



2250 Kalakaua Ave, Honolulu, HI 96815
waikikishoppingplaza.com/dining



Búho Cocina y Cantina

Roomy, modern rooftop restaurant & open-air bar featuring locally sourced Mexican eats & cocktails.

Royal Lobster

Simply Butter'd Fresh Maine Lobster Rolls & Salads perfect to take out or dine in!



Sky Waikiki

Wrap-around rooftop deck in the heart of Waikiki serving elevated seafood & cocktails.

Starbucks

Conveniently-located on the first floor serving all your favorite food & drinks.



Tanaka of Tokyo

Hawai'i's finest steak and seafood skillfully prepared by master teppanyaki chefs.



W
WOLFGANG'S
STEAKHOUSE
BY WOLFGANG ZWIENER

Happy Valentine's Day!

Monday, February 14, 2022 • 11am - 11pm

\$180 per couple

Reservations: 808.922.3600 or opentable.com

Special Valentines Menu

Two Glasses of
Gondolino Prosecco (Veneto, Italy)

Appetizer
Wolfgang Salad for 2

Main Course
Wolfgang's Signature Porterhouse Steak for 2
Certified USDA Prime Beef Aged In-house 28 Days
Served with our classic sides - Mashed Potatoes & Creamed Spinach

Dessert
New York Cheesecake & Chocolate Mousse Cake

Regular menu also available.

Wolfgang's Steakhouse by Wolfgang Zwiener • Royal Hawaiian Center, Bldg C, Level 3
Reservations: 808.922.3600 or opentable.com

Sun-Thur 7:00am - 11:00pm • Fri & Sat 7:00am - 11:30pm
NOW OPEN FOR BREAKFAST DAILY 7:00 - 11:00AM
Breakfast • Lunch • Happy Hour • Dinner • Late Night



Valentine's Menu

Sunday, February 13th, 4:00 - 10:00pm
Monday, February 14th 11:00am - 10:00pm

\$125

Amuse Bouche

*Fresh Caviar & Carpaccio
Crostini*

Appetizer

*Seafood Plate: Lobster, Shrimp,
Crab meat, Oyster and Ahi
Sashimi*

Soup

Lobster Bisque

Main Course

*Wild Halibut Meuniere: Capers,
Tomato and Lemon Butter Sauce*

OR

*Grilled Prime Filet: Truffle Red
Wine Sauce*

Dessert

Special

Regular menu also available.



Pesca is a luxurious Mediterranean seafood restaurant and wedding venue with breathtaking panoramic mauka and makai views from the top of the iconic Ilikai Hotel.

Pesca's Mediterranean-inspired menu boasts the freshest seafood from Hawai'i, the Mediterranean and around the globe (flown in daily), as well as other delicious entrees, appetizers and sides to please every palate.

PESCA WAIKIKI BEACH
The Ilikai Hotel & Luxury Suites
(Take glass elevator from Lobby)
1777 Ala Moana Blvd.
Honolulu, HI 96815

808.777.3100

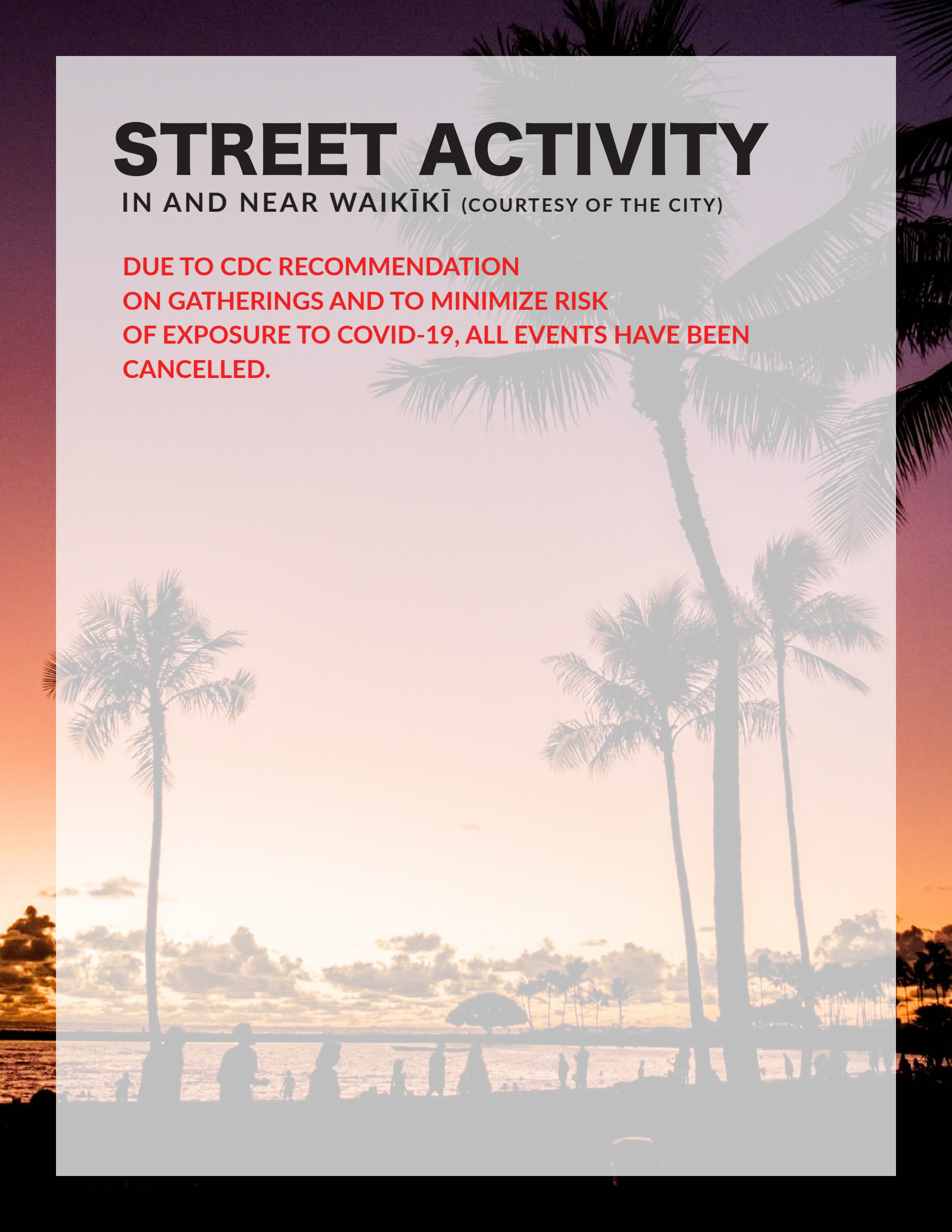
Lunch 11:00am - 4:00pm*
Happy Hour 3:00 - 6:00pm
Dinner 4:00 - 10:30pm
(*Lunch starting mid-February)

pescasea.com • opentable.com
@pescaWaikiki • @pescaWaikikiJP
@theIlikaichapel

STREET ACTIVITY

IN AND NEAR WAIKĪKĪ (COURTESY OF THE CITY)

**DUE TO CDC RECOMMENDATION
ON GATHERINGS AND TO MINIMIZE RISK
OF EXPOSURE TO COVID-19, ALL EVENTS HAVE BEEN
CANCELLED.**





WAIKĪKĪ IMPROVEMENT ASSOCIATION

Wikiwiki Wire is published on the first Monday of each month. If you would like to share your news with other members, please send your info to: editor@waikikiimprovement.com.

Submission Deadline

Waikīkī-related news and information submitted by members (or their PR agencies) for the Wikiwiki Wire newsletter should be received no later than **5 PM MONDAY, ONE WEEK PRIOR** to the newsletter's publication and distribution on the first Monday of each month.

News & Stories: Please submit any Waikīkī-related stories/articles as a Word doc and include photos to accompany stories/ articles. For best results, please upload photos as a separate JPEG attachment - maximum 2 MB each image.

Flyers/PDFs: Waikīkī-related flyers are welcome but must look like advertising flyers and not press releases. Please format flyers to an 8.5" x 11" size and submit them in a PDF format.

Press Releases: Please submit Waikīkī-related press releases as a Word doc. Press Releases that do not fit within one page of the Wikiwiki Wire newsletter will be returned for editing.

Photos: For best results, please upload photos as a separate JPEG attachment - maximum 2 MB each image.



WAIKĪKĪ IMPROVEMENT ASSOCIATION

We are a cross-section of business, government and the community; our members care about the future of this special place - Waikīkī.

For more than 40 years, the Waikiki Improvement Association has remained true to its objective: to improve, enrich and beautify Waikīkī for the benefit of residents and visitors alike and to promote conditions conducive to the economic and cultural good and for the betterment of the entire community.

HAWAIIAN DIACRITICAL MARKS

Waikīkī Improvement Association recognizes the use of diacritical marks (i.e., glottal stop (ʻ), macron (ā) in place names of Hawaiʻi, such as Waikīkī and Kalākaua Avenue and will include them whenever possible. We also respect the individual use (or not) of these markings for names of organizations and businesses.

There will also be times when we may not have a chance to add or change the markings in all of the articles submitted and when that happens, e kala mai.